

A3 Colour Intelligent Devices

IM C4500(A)

IM C5500(A)

IM C6000

✓ Printer ✓ Copier ✓ Scanner ✓ fax

Work smarter and more effectively with the IM C4500(A)/C5500(A)/C6000 intelligent devices – new technology that is designed to grow and adapt, just as your business does.

It's time to:

- Work smarter – using integrated workflow scan processes
- Get personal – with easy access to the apps you use most often
- Stay current - add new functions as needed
- Save costs – by reduced energy consumption

Have access to essential feature enhancements and upgrades, whenever you need them. Boost productivity by seamlessly integrating apps from our secure application site to optimise and streamline your workflow. Have confidence that your intelligent devices are ready to meet all your demands now and in the future – using technology that's scalable, secure, sustainable and simple.



SG Solutions Ltd (VAT. No. MT 1186 7706)
Triq Dun Karm, B'Kara By-Pass, B'kara BKR-9035, Malta.
A member of the VJ Salomone Group of Companies
Tel: +356 21442123 | Fax: +356 21442128
ricoh@sgsolutions.com.mt | www.sgsolutions.com.mt

Get more from your intelligent device:

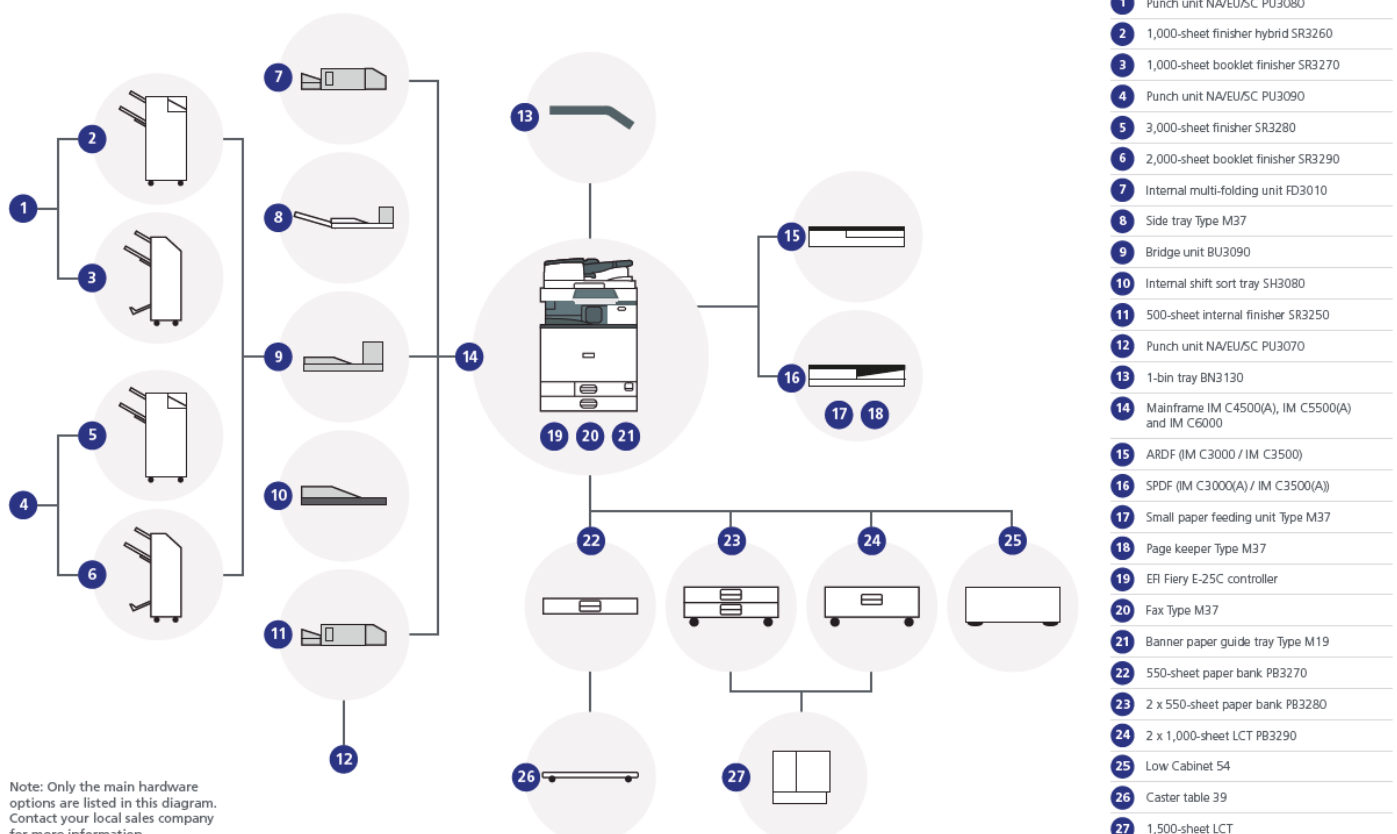
- Save time and streamline workflow – with the right finishing solution for the job
- Scan smaller documents with the small size paper scan unit
- Improved scan accuracy – double feed detection unit
- Enhance print management – with EFI controller

Take advantage of a variety of finishing and paper options to add a professional touch whilst meeting the printing demands of medium to large workgroups. Environmentally-friendly low TEC (Typical Electricity Consumption) values, deliver reduced energy consumption and cut running costs. RICOH Intelligent Support tools ensure your device uptime is maximised whilst self-help tools enable your teams to make simple fixes such as changing supplies, without involving expensive IT-resources.

With print speeds from 45 to 60 CPM, the IM C4500(A)/C5500(A)/C6000 devices are here to add value to your business. The easy-to-use 10.1" Smart Operation Panel with touch screen controls has improved responsiveness and large new look icons. Settings can be configured to suit each individual user's needs and with easier mobile connectivity, users can print or scan to the office network or cloud from their smart device, with built-in support for NFC, AirPrint* or Mopria.

- Production of professional flyers with inner multi-folding unit
- Reduction of outsourcing costs – by producing printed materials in-house
- Efficient working and reduced user intervention – by expanding paper capacity
- Increased uptime and performance – with RICOH Intelligent Support

IM C4500(A) / IM C5500(A) / IM C6000 hardware configuration



IM C4500A/IM C4500/IM C5500A/IM C5500/IM C6000

MAIN SPECIFICATIONS

	IM C4500	IM C4500A	IM C5500	IM C5500A	IM C6000
GENERAL					
Warm-up time			21 seconds		
First output speed: B/W	3.6 seconds	3.6 seconds	2.9 seconds	2.9 seconds	2.9 seconds
First output speed: full colour	5.4 seconds	5.4 seconds	4.2 seconds	4.2 seconds	4.2 seconds
Continuous output speed	45 ppm	45 ppm	55 ppm	55 ppm	60 ppm
Memory: standard			2 GB		
Memory: maximum			4 GB		
HDD: standard			320 GB		
HDD: maximum			320 GB		
ARDF capacity			100 sheets		
SPDF capacity			220 sheets		
Weight	101.4 kg	96 kg	101.4 kg	96 kg	101.4 kg
Dimensions: W x D x H	587 x 685 x 963 mm	587 x 685 x 913 mm	587 x 685 x 963 mm	587 x 685 x 913 mm	587 x 685 x 963 mm
Power source			220 - 240 V, 50/60 Hz		
COPIER					
Multiple copying	Up to 999 copies				
Resolution	600 dpi				
Zoom	From 25% to 400% in 1% steps				
PRINTER					
CPU	ApolloLake E3940 1.6 GHz				
Printer language: standard	PCL5c, PCL6, PostScript 3 (emulation), PDF direct (emulation)				
Printer language: option	Genuine Adobe ®PostScript®3™, IPDS, PictBridge, PDF Direct from Adobe®				
Print resolution: maximum	1,200 x 1,200 dpi				
Network interface: standard	Ethernet 10 base-T/100 base-TX/1000 base-T, USB Host I/F Type A, USB Device I/F Type B				
Network interface: option	Bi-directional IEEE 1284/ECP, Wireless LAN (IEEE 802.11a/b/g/n), Additional NIC (2nd port)				
Mobile printing capability	Apple AirPrint™, Mopria, Google Cloud Print, NFC, Ricoh Smart Device Connector				
Windows® environments	Windows® 7, Windows® 8.1, Windows® 10, Windows® Server 2008, Windows® Server 2008R2, Windows® Server 2012R2, Windows® Server 2016				
Mac OS environments	Macintosh OS X Native v10.11 or later				
UNIX environments	UNIX Sun® Solaris, HP-UX, SCO OpenServer, RedHat® Linux Enterprise, IBM® AIX				
SAP® environments	SAP® R/3®, SAP® S/4®				
Other supported environments	IBM iSeries				
SCANNER					
Scanning speed: ARDF	80 ipm (200/300 dpi)				
Scanning speed: SPDF	120 ipm (simplex)/240 ipm (duplex)				
Resolution: maximum	1,200 dpi				
Compression method	TIFF (MH, MR, MMR, JBIG2), Grayscale				
File formats	Single Page TIFF, Single page JPEG, Single page High compression PDF, Single page PDF/A, Multi page TIFF, Multi page PDF, Multi page High compression PDF, Multi page PDF/A				
Scan modes	E-mail, Folder, USB, SD Card				
FAX (OPTION)					
Circuit			PSTN, PBX		
Transmission speed			2 seconds		
Modem speed: maximum			33.6 Kbps		
Resolution: standard			8x3.85 line/mm, 200x100 dpi		
Resolution: option			16x15.4 line/mm, 400x400 dpi		
Compression method			MH, MR, MMR, JBIG		
Scanning speed	81 spm	68 spm	81 spm	68 spm	81 spm
Memory: standard			4 MB, (320 pages)		
Memory: maximum			60 MB, (4,800 pages)		
PAPER HANDLING					
Recommended paper size	Standard paper tray(s):SRA3, A3, A4, A5, A6, B4, B5, B6, Envelopes Optional paper tray(s):SRA3, A3, A4, A5, A6, B4, B5, B6, Envelopes Bypass tray:SRA3, A3, A4, A5, A6, B4, B5, B6, Envelopes, Custom Size paper				
Paper input: standard	1,200 sheets				
Paper input: maximum	4,700 sheets				
Paper output: standard	500 sheets				
Paper output: maximum	3,625 sheets				
Paper weight	Trays: (60 - 300 g/m²), Bypass: (52 - 300 g/m²), Duplex: (52 - 256 g/m²)				
Paper types	Plain paper, Recycle paper, Special paper, Color paper, Letterhead, Cardstock, Preprinted paper, Bond paper, Coated paper, Envelope, Gloss paper, Label paper, OHP				
ECOLOGY					
Power consumption: max.			Less than 1,850 W		
Power consumption operation: B/W	644.6 W	644.6 W	821.7 W	821.7 W	837.7 W
Power consumption operation: Full colour	729.9 W	729.9 W	935.4 W	935.4 W	957 W
Power consumption: ready			59 W		
Power consumption: sleep			0.62 W		
TEC	1.8 kWh	1.8 kWh	2.5 kWh	2.5 kWh	2.7 kWh

IM C4500A/IM C4500/IM C5500A/IM C5500/IM C6000

MAIN SPECIFICATIONS

	IM C4500	IM C4500A	IM C5500	IM C5500A	IM C6000
OUTPUT TRAYS AND FINISHER OPTIONS					
2x 550-sheet Paper tray	Paper size: (SRA3, A3, A4, A5, A6, B4, B5, B6), Paper weight: (60-300 g/m ²)				
1x 550-sheet Paper tray	Paper size: (SRA3, A3, A4, A5, A6, B4, B5, B6), Paper weight: (60-300 g/m ²)				
2,000-sheet Large capacity tray	Paper size: (A4), Paper weight: (60-300 g/m ²)				
1,500-sheet side Large capacity tray	Paper size: (A4, B5), Paper weight: (60-300 g/m ²)				
1,000-sheet Hybrid finisher	Paper size: (SRA3, A3, A4, A5, A6, B4, B5, B6), Paper weight: (52-300 g/m ²), 1,000 sheets, Staple capacity: (50 sheets), Staple paper size: (A3, A4, A5, B4, B5), Staple paper weight: (52-105 g/m ²), Staple positions: (Top, Bottom, 2 Staples)				
3,000-sheet Finisher	Paper size: (SRA3, A3, A4, A5, A6, B4, B5, B6), Paper weight: (52-300 g/m ²), Stack capacity: (3,000 sheets), Staple capacity: (50 sheets), Staple paper size: (A3, A4, A5, B4, B5), Staple paper weight: (52-105 g/m ²), Staple positions: (Top, Bottom, 2 staples, Top-slant)				
1,000-sheet Booklet finisher	Paper size: (SRA3, A3, A4, A5, A6, B4, B5, B6), Paper weight: (52-300 g/m ²), Stack capacity: (1,000 sheets), Staple capacity: (50 sheets), Staple paper size: (A3, A4, A5, B4, B5), Staple paper weight: (52-105 g/m ²), Staple positions: (Top, Bottom, 2 staples, Booklet)				
2,000-sheet Booklet finisher	Paper size: (SRA3, A3, A4, A5, A6, B4, B5, B6), Paper weight: (52-300 g/m ²), Stack capacity: (2,000 sheets), Staple capacity: (50 sheets), Staple paper size: (A3, A4, A5, B4, B5), Staple paper weight: (52-105 g/m ²), Staple positions: (Top, Bottom, 2 staples, Booklet)				
500-sheet Internal finisher	Paper size: (A3, A4, A5, A6, B4, B5), Paper weight: (52-300 g/m ²), Stack capacity: (500 sheets), Staple capacity: (50 sheets), Staple paper size: (A4, A5, B4, B5), Staple paper weight: (52-105 g/m ²), Staple positions: (Top, Bottom, 2 staples)				
Internal shift tray	Tray capacity: (250 sheets), Paper size: (SRA3, A3, A4, A5, A6, B4, B5, B6), Paper weight: (52-300 g/m ²)				
One-bin tray	Tray capacity: (125 sheets), Paper size: (A3, A4, A5, B4), Paper weight: (52-300 g/m ²)				

OTHER OPTIONS

Fax unit, G3 Interface, Fax connection unit, Fax memory unit, Cabinet, Caster table, VM card, Memory unit, Side Tray, Banner paper guide tray, Punch units, Internal Multi-fold unit, IPDS unit, Camera direct print card, Genuine PostScript 3, IEEE 1284 I/F, IEEE 802.11 a/g/n I/F, Device server unit, File format converter, OCR unit, Enhanced security HDD, Data overwrite security unit, Small paper feeding unit, Page keeper, Imageable area extension unit, ADF handle, External keyboard bracket, Counter I/F unit, Key counter bracket, NFC card reader, Smart card reader built-in unit, EFI controller, EFI Impose, EFI Compose, EFI Hot folders, EFI Spot on

CONSUMABLES

Toner: black	33,000 prints
Toner: cyan/magenta/yellow	22,500 prints

Consumable yield figures are based on 2p/j 5% coverage on A4

*Airprint certification will be available in 2019.



SG Solutions Ltd (VAT. No. MT 1186 7706)
Triq Dun Karm, B'Kara By-Pass, B'kara BKR-9035, Malta.
A member of the VJ Salomone Group of Companies
Tel: +356 21442123 | Fax: +356 21442128
ricoh@sgsolutions.com.mt | www.sgsolutions.com.mt